



BRU
GGE

Wijkpark Ten Boomgaard – Rediscovering the Kerkebeek

Jonas Lagrou, City of Bruges

30th June 2021

City of Bruges

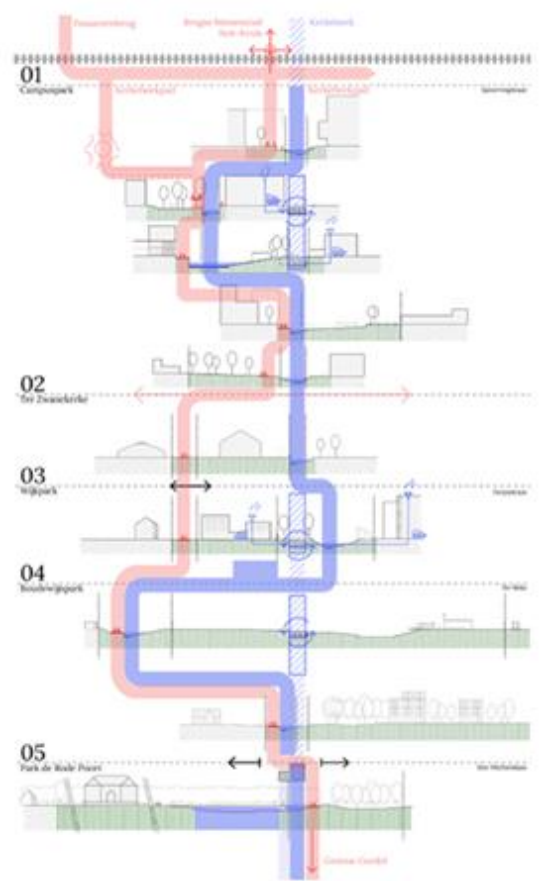


- Belgium – Flanders
- Capital city Province of West Flanders
- 138 km², 119.000 inhabitants, 862/km²
- UNESCO protected city centre
- Coastal city, Port of Zeebrugge
- Sustainable urban development vs climate adaptation/resilience and tourism

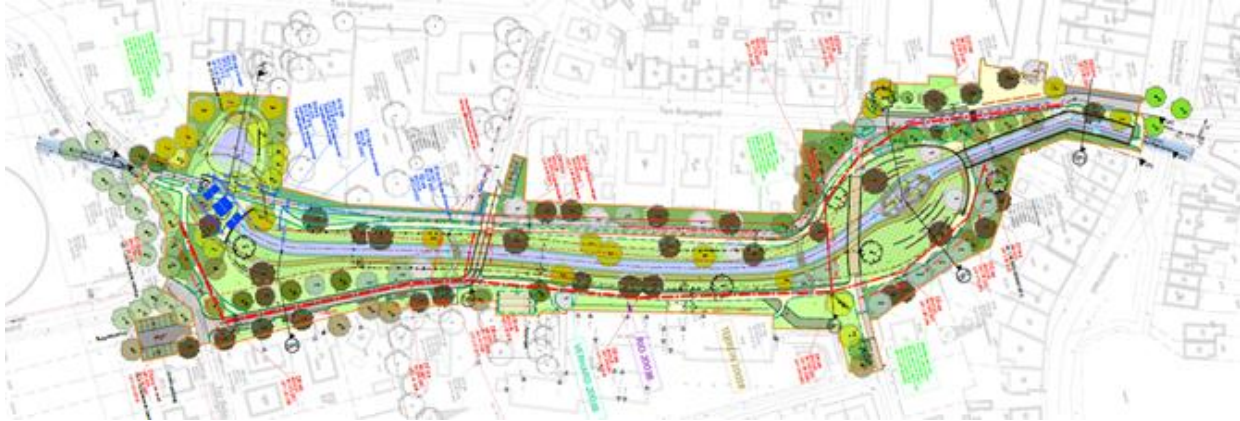


Reason for GI Pilot

- **River contract** for Kerkebeek valley – Flemish Environment Agency (VMM)
- **Kerkebeek** = flood sensitive (underground) stream
- **Climate adaptation plan** for the City of Bruges
- **Vision document and framework plan** for the Kerkebeek and Kerkebeek path
- **GI Pilot = quick win illustration** in zone 3
Wijkpark Ten Boomgaard



The GI Pilot



- Neighborhood park focused on water experience
- Open, visible and softened Kerkebeek valley
- 24.620 m² project area
- Today 5.460 m³ water buffer, new situation 9.240 m³
= additional water buffer 3.780m³ (+70%)
- Maximum preservation of tree stock
- Ground works start October 21, end August 22



Key Pilot Benefits



WATER RETENTION & INFILTRATION

Core objectives: daylighting the Kerkebeek, reduce flood risk and improve water management



HABITAT FOR BIODIVERSITY

Bee friendly planting, Bee plan City of Bruges



AESTHETIC APPRECIATION

Nice neighbourhood park focussed on water experience



PHYSICAL & MENTAL HEALTH

A green blue, safe and special meeting place for all.